



HUNG FU LEATHER

EXCELLENCE & QUALITY. THE ORIGINAL

FALL WINTER 2021 COLLECTIONS



ABOUT US

Producing more than 40 million square feet annually with a lead time less than 14 days. We are supplying for shoe factories all over the world with our quality leather.

Our major clients are Nike, Adidas, Puma, New Balance, VF group, WWW Group, Asics, Mizuno, Jalk Wolfskin and other premium brands.

We are certified by LWG as their Gold member for the past 4 years.

We import the finest raw materials (wet blue splits) from Argentina and USA and, chemicals which are used to meet the standards of European Union and USA.



HF Super High Suede

The most high-end cow suede collection in our production line.

Aniline leather with excellent nap and tracing.

Available in 1.2-1.6mm, made from eco-friendly material.

Has a coefficient rate of 85%.

Very good for dark and bright colours.





HF High Suede

The best selling suede in HF with fine and short nap.

Available upto the thickness of 2.0-2.2mm.

Co-efficient rate of 85% with an average skin size of 12sf.





HF Split Suede

The Entry level suede for sports and casual shoes.

Available upto a thickness of 2.0-2.2mm

Has a co-efficient rate of 85% and also available at 12sf.

It is very good for dark and bright colours.





Junior Suede

An economical cow split suede.

Recommended for kids shoes and small upper cuttings for shoes.

Has a cutting rate of 75% and also available at 12sf.

It is very good for dark and bright colours.



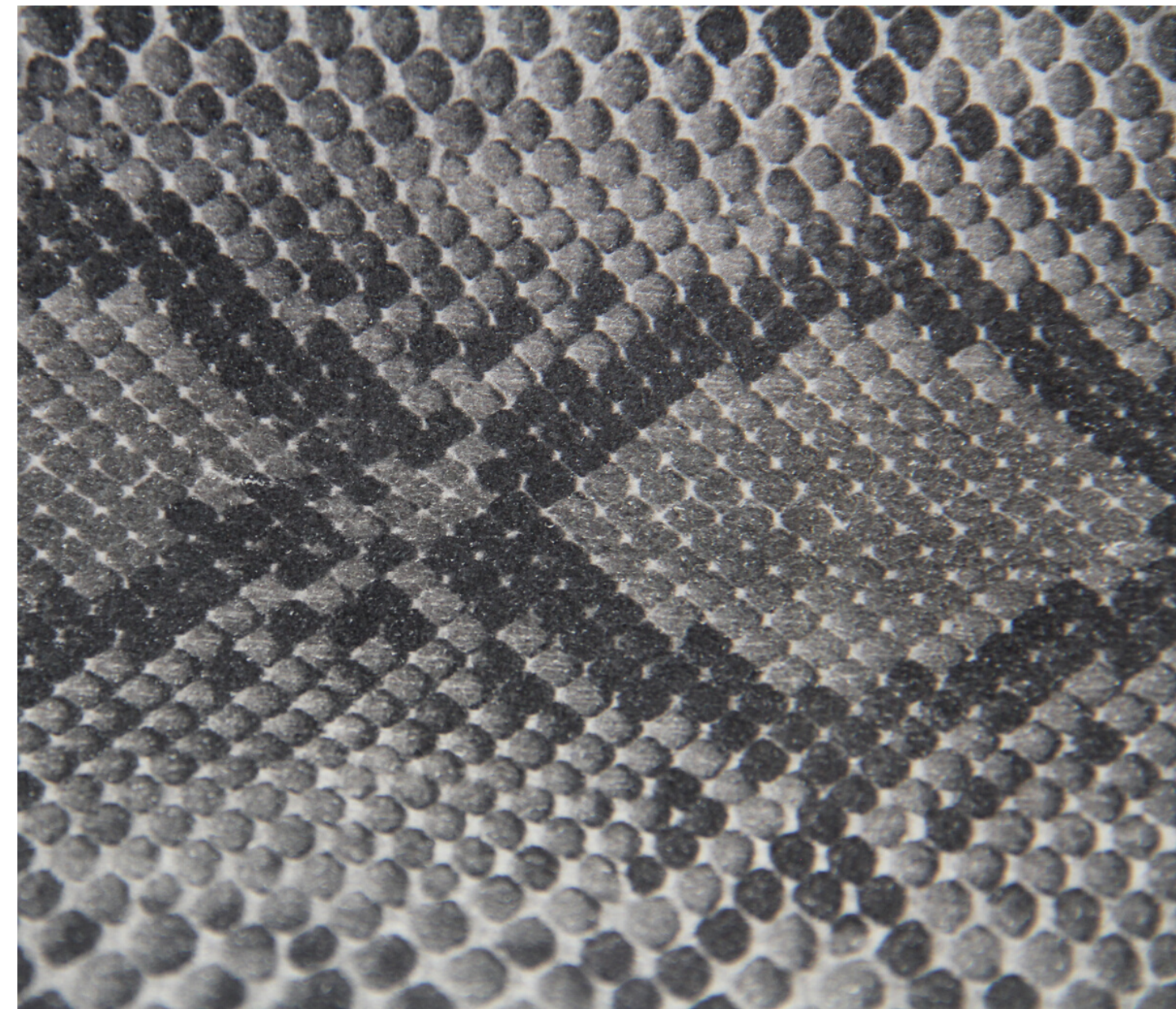


Water Trasnfer Suede

It has a feature of having animal patterns with a soft, smooth and short nap.

The suede is coated with water based foil transfer.

Has a cutting rate of 85% and available at a skin size of 12sf.



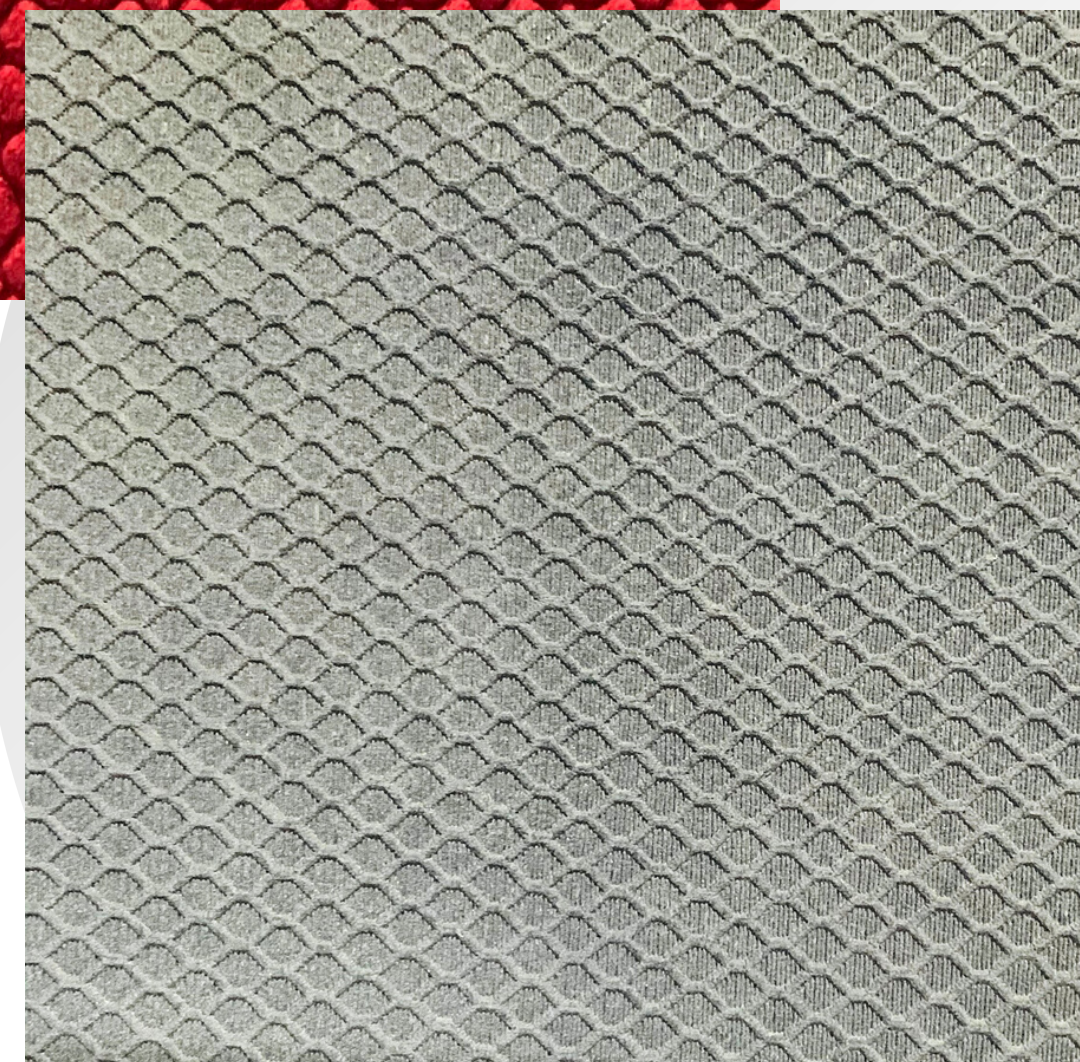


Emboss Suede

Has a waxy finish with an emboss pattern of the suede.

It can be customized according to requirements.

Has a co-efficient rate of 85% and available in a skin size of 12sf.





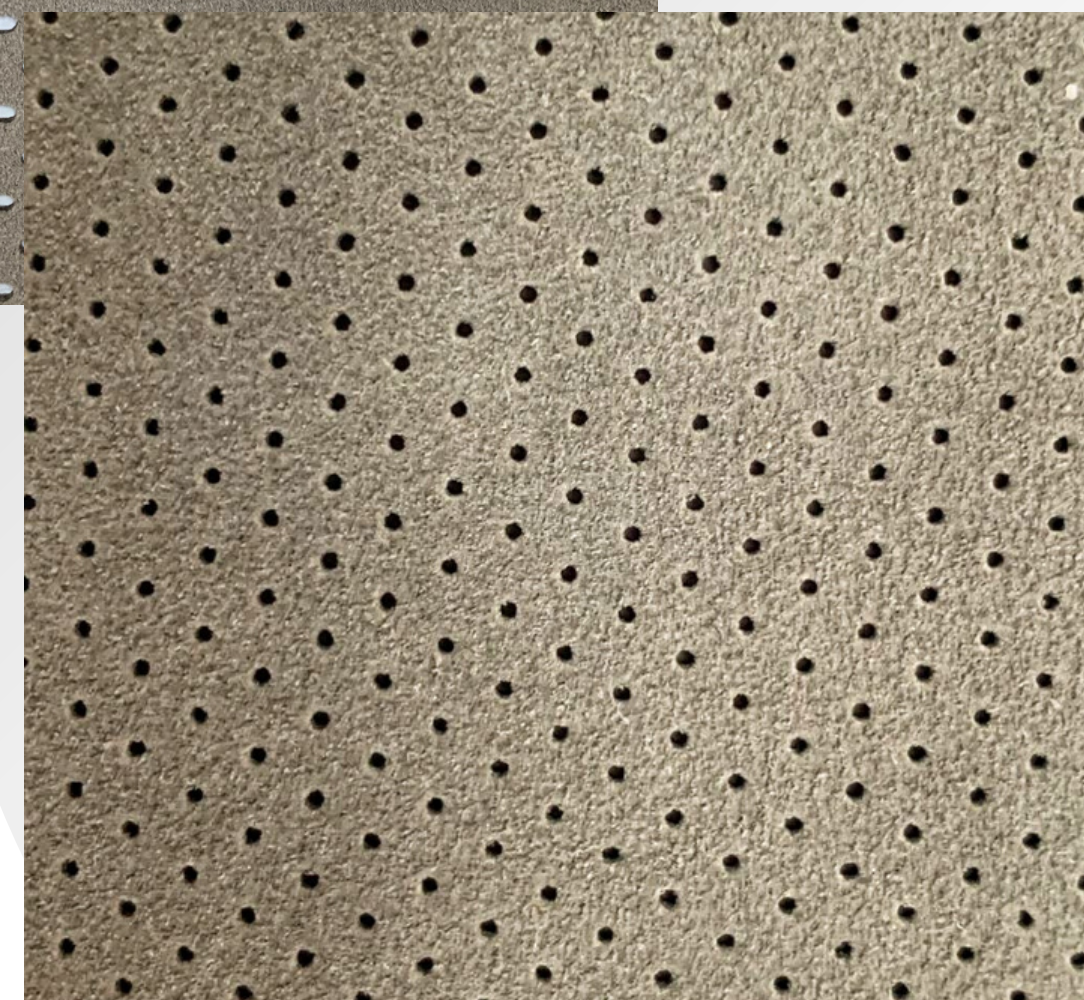
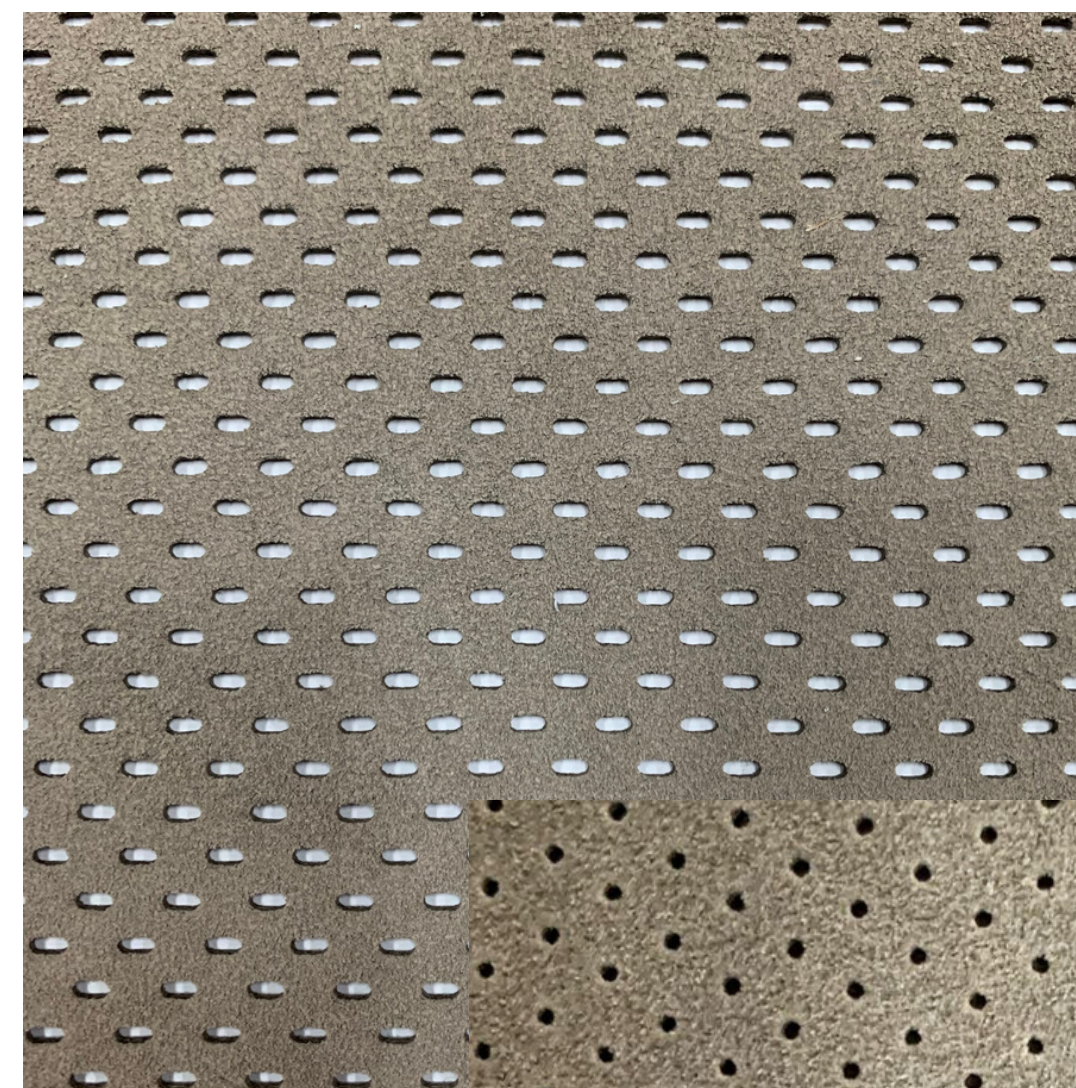
Perf Suede

An Perforation style with an nice nap to the leather.

It is highly recommended for having more of a breathable feel.

We have a booklet of Perf type and design to choose from.

Having a co-efficient rate of 85% and available at a skin size of 12sf.





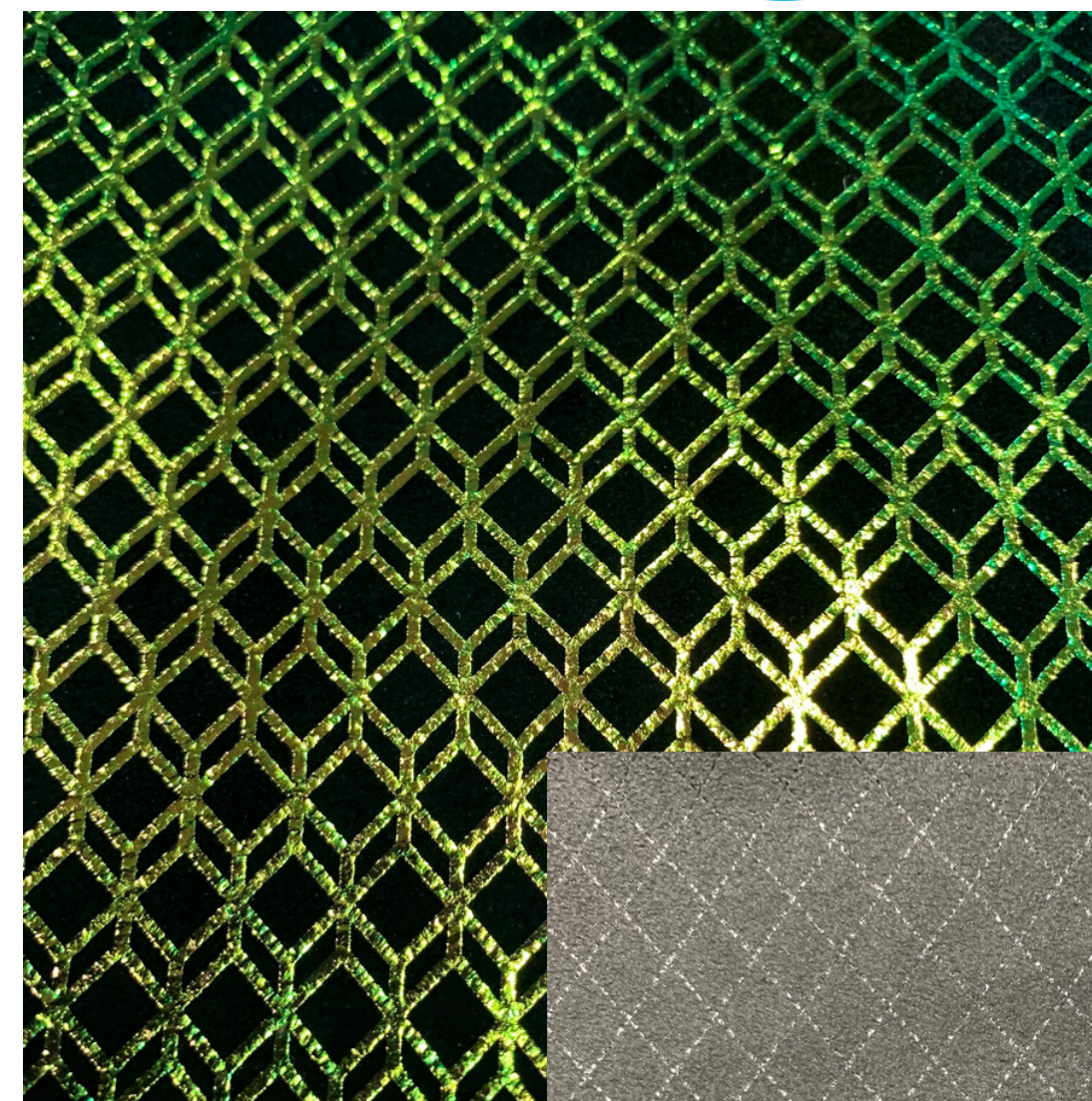
Elevate Suede

An eco-friendly foil is used to give a coating on top of our suede

It is highly recommended for casual and women shoes.

We have a booklet of Foil type and design to choose from.

Having a co-efficient rate of 85% and available at a skin size of 12sf.





Waxy Suede

Has an Waxy finish on top of the suede.

It is solvent free and has an uneven effect on the leather.

Has a cutting rate of 85% and is available in 12sf

Recommended to use is part of the shoe in which not alot of force is applied.





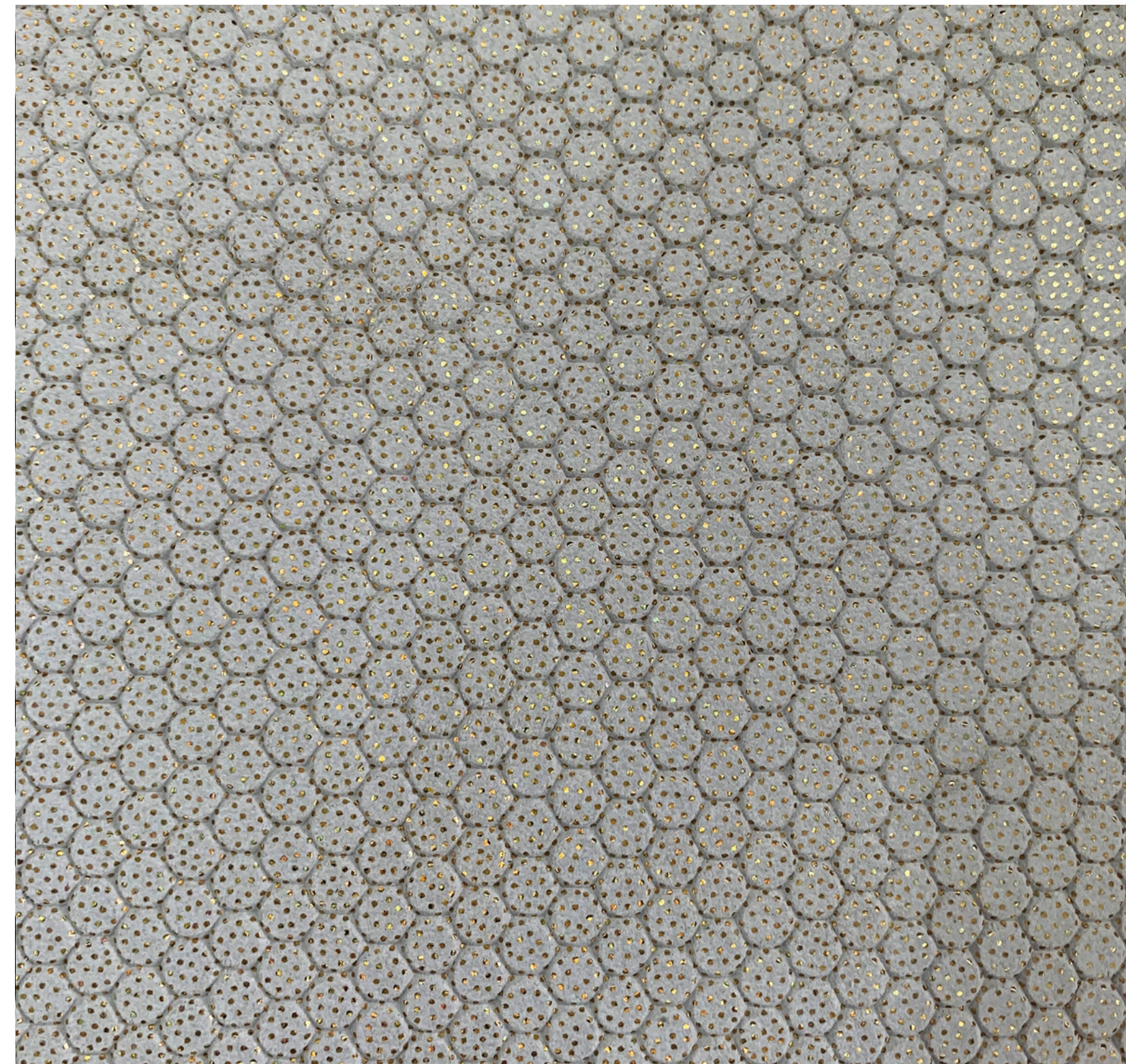
Sprinkle Suede

Eco-Friendly foil with Emboss pattern.

It is highly recommended for external fashion

Patterns and colour can be customized but a maximum of 3 colours is recommended.

Having a cutting rate of 85% and available at a skin size of 6sf.





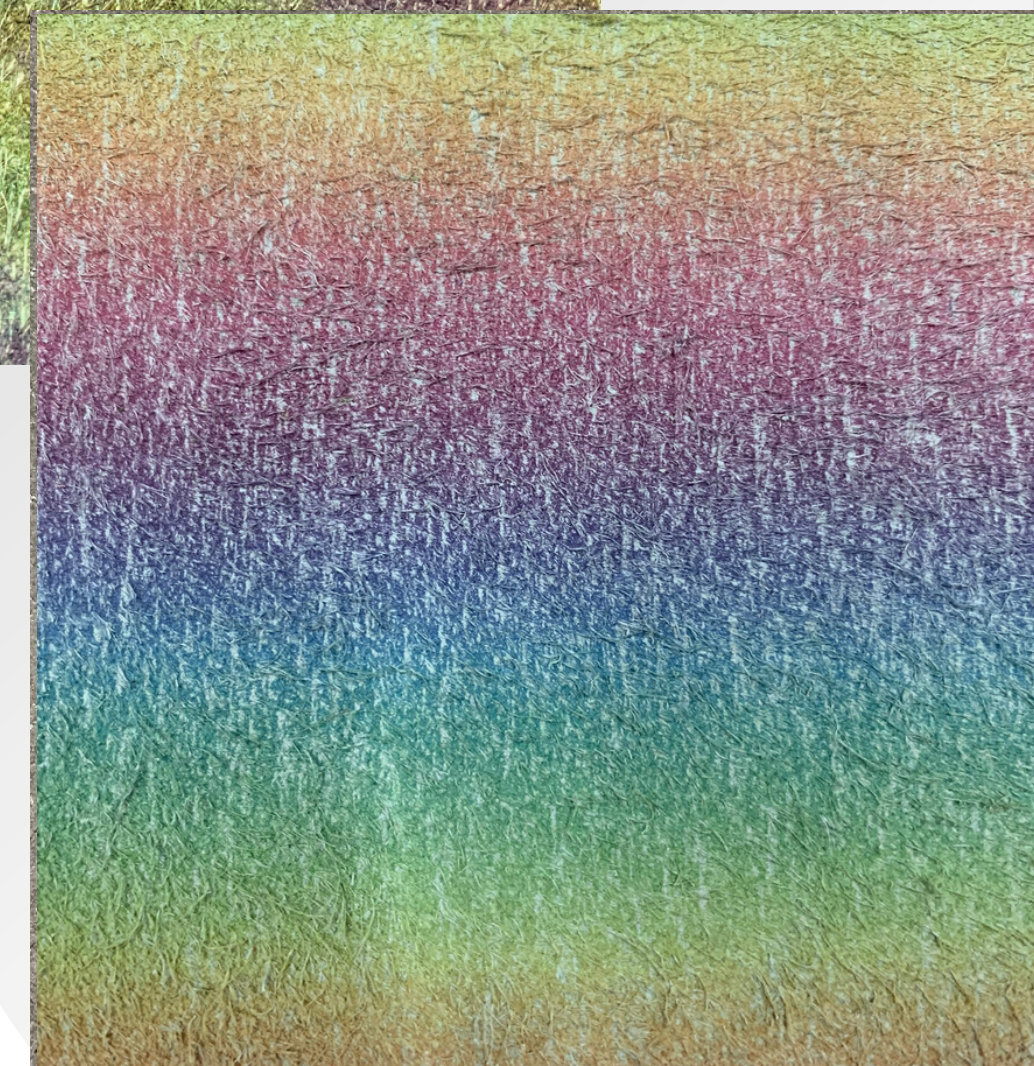
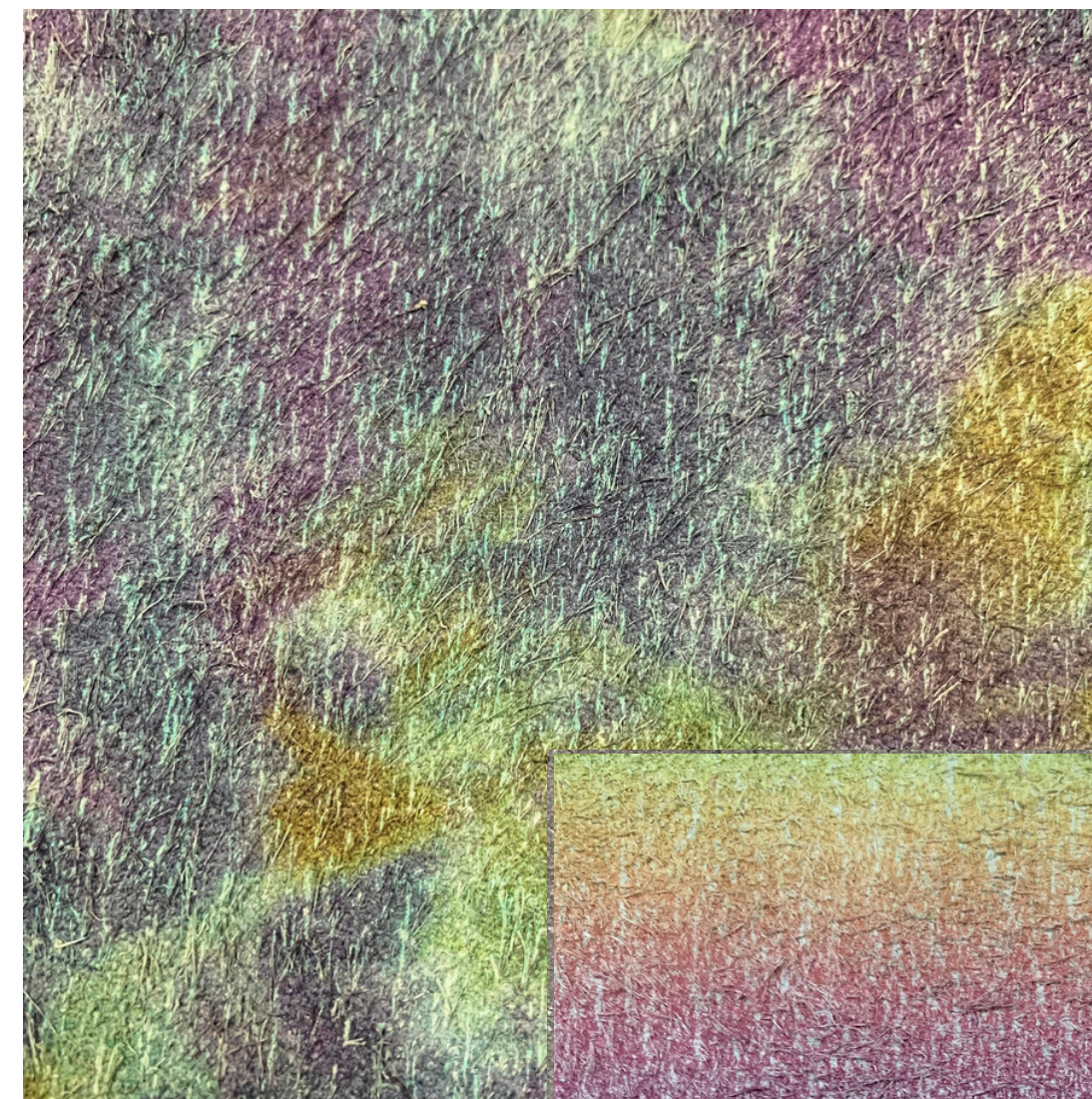
Hairy Suede

A hairy effect is being given to the suede.

It is highly recommended for external fashion and places where the tensile strength is not the priority.

Patterns and colour can be customized.

Having a coefficient rate of 85% and available at a skin size of 10sf.





Yamhill Suede

A Metallic foil miling suede. Solvent free.

It is highly recommended for fashion shoes.

Crust color is customizable.

Having a co-efficient rate of 85% and available at a skin size of 12sf.





OUR PARAMETERS

LEAD TIME

Production Lead time: 21~24 days

Sample Lead Time: 7~10 Days

COLOUR TEST

Colour Migration: 2

Crocking Test

Dry: 2

Wet: 1.5

PHYSICAL TEST

Tear Strength: 30N

Tension Strength: 11 MPa

Stitch Tear Resistance: 60N



MAILING ADDRESS

M4-M5, Viet Huong Industrial Park 2,
An Tay Village , Ben Cat Town,
Binh Duong Province, VietNam

PHONE NUMBER

+84 274-357267/8/9

FAX

+84 274-3579266

EMAIL US

hf-sales-06@hungfuleather.com
michaelchen123l@hungfuleather.com



CONNECT WITH US



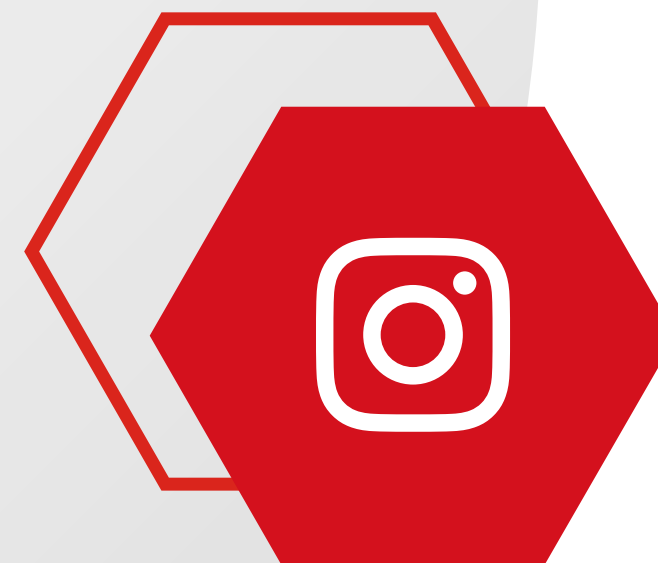
FACEBOOK

@hungfuleather



WEBSITE

www.hungfuleather.net



INSTAGRAM

hungfuleatherco



WEBSITE

www.hungfuleather.net

